



touchREVIEWS

in Oncology & Haematology

VOLUME 18 • ISSUE 2 • 2022

EDITORS-IN-CHIEF: SHAJI K KUMAR
AXEL S MERSEBURGER

Management of Metastatic Triple-negative Breast Cancer: Focus on Targeted Therapies

Jennifer C Keenan, Phoebe K Ryan, Arielle J Medford et al.

Treatment Options in *BRAF*-mutant Metastatic Colorectal Cancer

Marco Cefali, Maria Celeste Palmarocchi and Sara De Dosso

Is Triple Therapy the New Standard for Metastatic Hormone-sensitive Prostate Cancer?

Joanna Hack and Simon J Crabb

Trilaciclib: A First-in-class Therapy to Reduce Chemotherapy-induced Myelosuppression

Joanna A Young and Antoinette R Tan

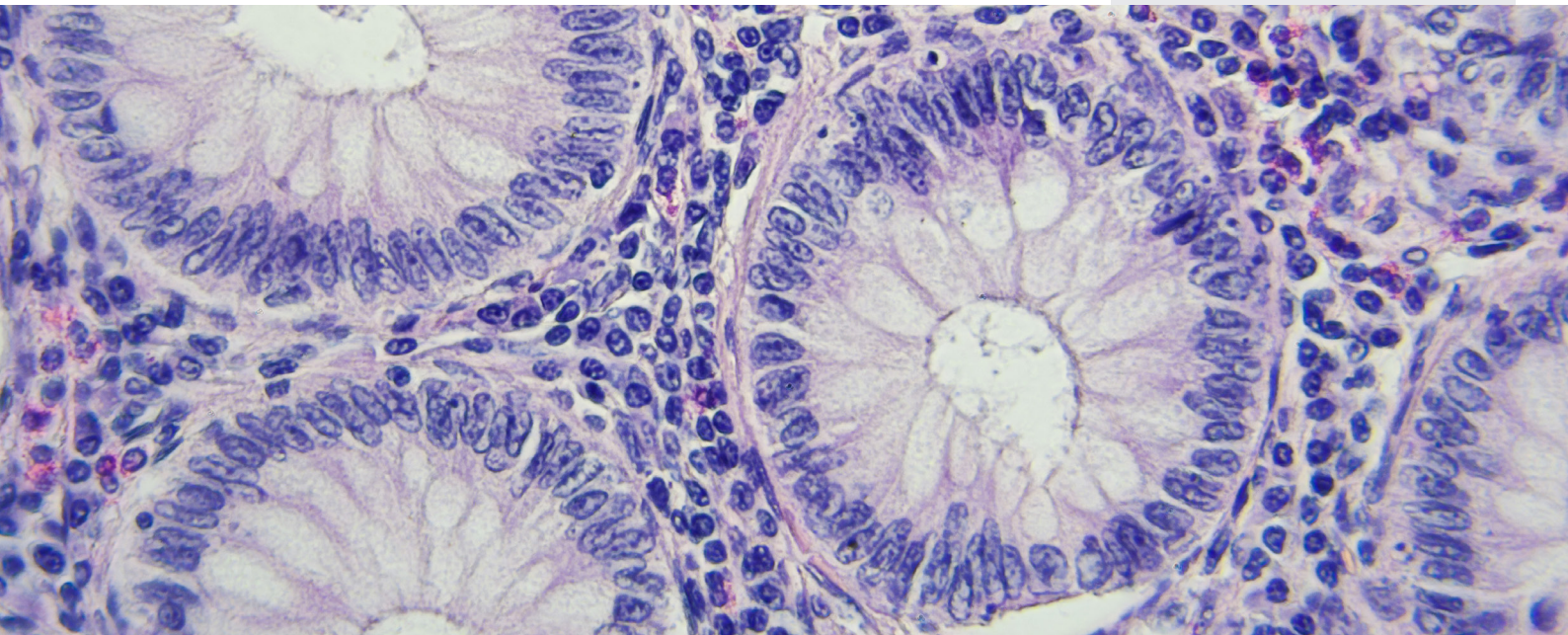
www.touchONCOLOGY.com

touchREVIEWS

in Oncology & Haematology

Volume 18 • Issue 2 • 2022

Cover image: Colon cancer microscopic photography, magnification x400 By lukszczepanski ©stock.adobe.com



touchREVIEWS in Oncology & Haematology wishes to thank the organizations below for their assistance. This does not constitute any official endorsement.



Editorial Directors

Gina Furnival
Helen Fowler
Katey Gabrysch
Sophie Nickelson

Commissioning Editors

Victoria Jones
Shanice Allen

Editorial Workflow

Lisa Glass
Heather Hall
Marianna Mignani
Atiya Henry
Danielle Crosby

Design Manager

Julie Stevenson

Head Medical & Editorial

Nicola Cartridge
E: nicola.cartridge@touchmedicalmedia.com
T: +44 (0)20 7193 3186

CEO & Managing Director

Barney Kent
E: barney.kent@touchmedicalmedia.com
T: +44 (0)20 7193 3009

Head of Strategic Partnerships

Caroline Markham
E: caroline.markham@touchmedicalmedia.com
T: +44 (0)20 7193 3704

All information obtained by Touch Medical Media and each of the contributors from various sources is as current and accurate as possible. However, due to human or mechanical errors, Touch Medical Media and the contributors cannot guarantee the accuracy, adequacy or completeness of any information, and cannot be held responsible for any errors or omissions, or for the results obtained from the use thereof. Where opinion is expressed, it is that of the authors and does not necessarily coincide with the editorial views of Touch Medical Media. Statistical and financial data in this publication have been compiled on the basis of factual information and do not constitute any investment advertisement or investment advice. For the avoidance of doubt, the information contained in this publication is intended for use by licensed medical professionals. The content should not be considered medical advice, diagnosis or treatment recommendations.

© 2021 Touch Medical Media Services Limited, a private limited company registered in England and Wales at Lancashire Gate, 21 Tiviot Dale, Stockport, Cheshire, SK1 1TD with registered number 12930327. All rights reserved. eISSN: 2752-5481



www.touchmedicalmedia.com

touchREVIEWS

in Oncology & Haematology

Editors-in-Chief

Shaji K Kumar
Mayo Clinic, Rochester, MN, USA

Axel S Merseburger
Department of Urology, Campus Lübeck, University Hospital Schleswig-Holstein, Lübeck, Germany

Matti S Aapro
Multidisciplinary Oncology Institute, Genolier, Switzerland

Eleni Andreopoulou
University of Texas MD Anderson Cancer Center, Houston, TX, USA

Paolo A Ascierto
Unit of Melanoma, ational Tumor Institute 'Fondazione G Pascale', Naples, Italy

John L Marshall
Lombardi Comprehensive Cancer Center, Washington, DC, USA

David G Mutch
Washington University School of Medicine, St Louis, MO, USA

Maurice Pérol
Thoracic Oncology, Medical Oncology Department of Léon Bérard Cancer Center, Lyon, France

Editorial Board

Mohammad Ammad-Ud-Din
Rochester General Hospital, Rochester, NY, USA

Ahmad Awada
Medical Oncology Clinic, Jules Bordet Institute, Brussels, Belgium

Wadie F Bahou
State University of New York, Stony Brook, NY, USA

Tanios Bekaii-Saab
Mayo Clinic, Phoenix, AZ, USA

Raffaele Califano
Department of Medical Oncology, The Christie NHS Foundation Trust, Manchester, UK

Ezra Cohen
University of Chicago Medical Center, Georgetown University, Chicago, IL, USA

Jorge Cortes
Georgia Cancer Center, Augusta University, Augusta, GA, USA

Massimo Dominici
Medical Oncology, University Hospital of Modena, Modena, Italy

Martin J Edelman
Fox Chase Cancer Center, Philadelphia, PA, USA

Willem E Fibbe
Department of Immuno-haematology and Blood Transfusion, Leiden University Medical Center, Leiden, Netherlands

Robin Foà
Institute of Hematology, 'La Sapienza' University of Rome, Rome, Italy

Michael K Gibson
University of Pittsburgh Cancer Institute, Pittsburgh, PA, USA

Axel Grothey
West Cancer Center, Germantown, TN, USA

Martin Hutchings
The Finsen Centre, National Hospital, Copenhagen University Hospital, Copenhagen, Denmark

Claudine Isaacs
Lombardi Comprehensive Cancer Center, Georgetown University, Chicago, IL, USA

Elias Jabbour
University of Texas MD Anderson Cancer Center, Houston, TX, USA

Ken Kato
National Cancer Center Hospital, Tokyo, Japan

Daniel Kelly
Royal College of Nursing, School of Healthcare Sciences, Cardiff University, Cardiff, UK

Ticiana Leal
Emory University School of Medicine, Atlanta, GA, USA

Charles D Lopez
Oregon Health & Science University, Portland, OR, USA

Domenica Lorusso
Catholic University of Rome, Rome, Italy

Mario Mandalà
Department of Oncology and Haematology, Papa Giovanni XXIII Cancer Center Hospital, Bergamo, Italy

Pier Mannuccio Mannucci
Maggiore University Hospital of Mila; Angelo Bianchi Bonomi Haemophilia and Thrombosis Centre, Milan, Italy

Bruce Minsky
University of Texas MD Anderson Cancer Center, Houston, TX, USA

Michael J Morris
Memorial Sloan Kettering Cancer Center, New York, NY, USA

Suchita Pakkala
Emory University School of Medicine, Atlanta, GA, USA

Bernardo Rapoport
The Medical Oncology Centre of Rosebank, Johannesburg, South Africa

Andrew I Schafer
Weill Cornell Medical College, New York, NY, USA

Emma Searle
The Christie Hospital NHS Foundation Trust, Manchester, UK

Lena Sharp
Regional Cancer Center, Stockholm, Sweden

Gerard Socié
Department of Bone Marrow Transplantation, Hospital Saint-Louis, Paris, France

Ulka Vaishampayan
Wayne State University, Detroit, MI, USA#

Benjamin Weinberg
Ruesch Center for the Cure of Gastrointestinal Cancers; Lombardi Comprehensive Cancer Center, Washington, DC, USA

Antoinette J Wozniak
Wayne State University; Barbara Ann Karmanos Cancer Institute, Detroit, MI, USA

touchREVIEWS

in Oncology & Haematology

Established: January 2005 Frequency: Bi-annual
Current edition: Volume 18 Issue 2, 2022

Aims and Scope

- *touchREVIEWS in Oncology & Haematology* enables time-pressured physicians to stay abreast of major advances and opinion in oncology and haematology practice.
- *touchREVIEWS in Oncology & Haematology* comprises balanced and comprehensive articles written by leading authorities, addressing the most important and salient developments in the oncology and haematology fields.
- *touchREVIEWS in Oncology & Haematology* endeavours to support physicians, clinicians and related healthcare professionals in continuously developing their knowledge, effectiveness and productivity. The editorial policy has been designed to encourage discussion among this peer group.
- Comprehensive bibliographies for each article mean that *touchREVIEWS in Oncology & Haematology* is an informative and valuable reference tool for use throughout the year.
- All articles are subject to peer review, and must adhere to the ICJME, GPP 2022, and COPE guidelines.

Structure and Format

- *touchREVIEWS in Oncology & Haematology* is a peer-reviewed, free-to-access, bi-annual journal comprising review articles, editorials, special reports and original research.
- The structure of each edition of the publication comprises section categories determined by the Editor. The degree of coverage assigned to each category is the decision of the Editor, and in part reflects the views of the Editorial Board.
- All articles declare any author disclosures along with any funding, financial support and medical writing assistance.
- Each edition of *touchREVIEWS in Oncology & Haematology* is published in full online at www.touchONCOLOGY.com

Editorial Expertise

touchREVIEWS in Oncology & Haematology is supported by various levels of expertise:

- Guidance from an Editorial Board consisting of leading authorities from a variety of oncology and haematology disciplines.
- Invited contributors who are recognized authorities from their respective fields.
- Peer review – conducted by experts appointed for their experience and knowledge of a specific topic.
- An experienced team of Editors and Technical Editors.

Peer Review

- On submission, all articles are assessed by the Editor to determine their suitability for inclusion and appropriateness for peer review.
- The Editor identifies appropriate reviewers, who are selected on the basis of their specialist knowledge in the relevant area, following consultation with a member of the Editorial Board where necessary.
- We aim to have the final peer review decision within 4 weeks.
- Following review, papers are either accepted without modification, returned to the author(s) to incorporate required changes, or not accepted for publication.

- The Editor reserves the right to accept or reject any proposed amendments on the advice of the Editorial Board and reviewers.

Submissions and Instructions for Authors

- The Editor commissions articles with guidance from the Editorial Board and unsolicited articles are welcomed.
- The Editor is always keen to hear from authors wishing to discuss potential submissions, and will give due consideration to any proposals. Please contact the Editor for further details.
- 'Instructions for Authors' is available from www.touchONCOLOGY.com

Distribution and Readership

touchREVIEWS in Oncology & Haematology is distributed bi-annually through controlled circulation to senior professionals in the field globally.

Free-to-access

All articles are free-to-access, which allows everyone in the oncology and haematology field to download published articles for free.

Abstracting and Indexing

touchREVIEWS in Oncology & Haematology is abstracted, indexed and listed in Embase, EBSCO, Genamics JournalSeek, Google Scholar, IndexCopernicus and Summon by Serial Solutions.

Copyright

Authors transfer the copyright of the article to Touch Medical Media, who publish the article as free-to-access to registered users.

Online

www.touchmedicalmedia.com provides clinicians and other industry professionals with a free resource of articles from eight therapy areas including cardiology, endocrinology, immunology, infectious diseases, neurology, oncology and haematology, ophthalmology and respiratory and pulmonary medicine.

Society Partners

touchONCOLOGY has developed very valuable partnerships with the most respected not-for-profit medical societies both in Europe and the USA. These partnerships are key as touchONCOLOGY.com helps to promote awareness of these medical societies whilst also providing free-to-access, peer reviewed articles and multimedia content to the society members, which ensures that the industry is kept up-to-date with the latest cutting-edge content and opinion from world-renowned doctors.

About Touch Medical Media

Touch Medical Media publishes a rich and diverse portfolio of free-to-access, peer-reviewed journals across the clinical and pharmaceutical arenas. Touch Medical Media aims to assist in the education and practice of healthcare and pharmaceutical professionals. □



Improving outcomes in acute lymphoblastic leukaemia

[Learn more](#)



This activity has been funded by Amgen. This activity is provided by Touch Medical Communications (TMC) for touch touchONCOLOGY.

Advancing the management of MDS and AML: *Novel immune-based approaches*

[Learn more](#)



This activity is funded by an independent medical education grant from Novartis and is provided by touchIME.

Integrating shared decision-making to optimize care of patients with high-risk early breast cancer

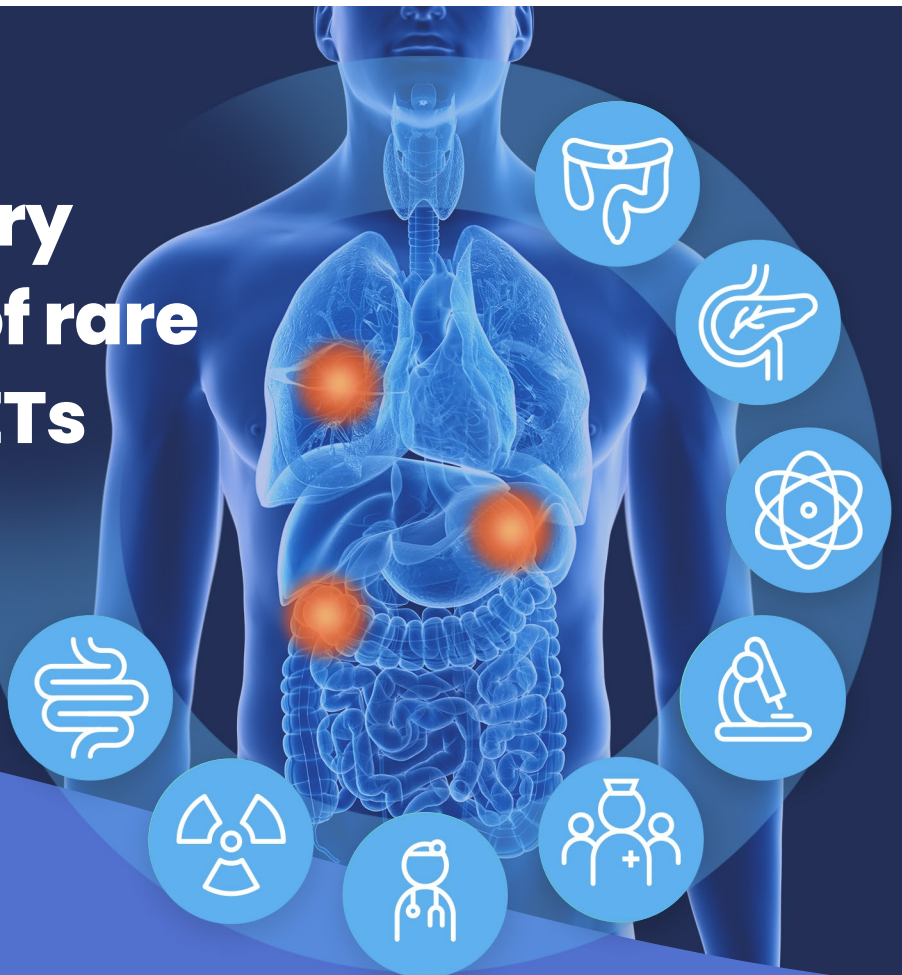
Check out the discussion in full



Funded by an independent medical education grant from Eli Lilly.
This activity is jointly provided by USF Health and touchIME.

Advancing the multidisciplinary management of rare and unusual NETs

Learn more



This activity is funded by an independent medical education grant from Advanced Accelerator Applications and is jointly provided by USF Health and touchIME.

Getting Personal Individualizing therapy for cold agglutinin disease



Learn now



Improving outcomes for patients with advanced RCC:

What is the role of emerging combination
therapies in the first-line setting?

Watch Now

“

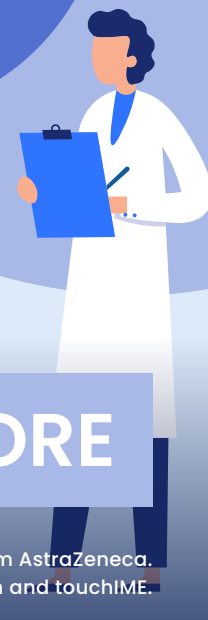
*There is no doubt that
VEGF-IO and IO-IO
combinations have an
overall survival benefit,
meaning we are curing
patients here, compared
with single-agent TKIs.*

*- Dr Toni Choueiri, Dana-Farber Cancer Institute,
Harvard Medical School, Boston, MA, USA*



Exploring the latest advances in first-line treatment of ES-SCLC:

Translating the data to clinical practice



LEARN MORE

touchTM
ONCOLOGY

This activity is funded by an independent medical education grant from AstraZeneca.
This activity is jointly provided by USF Health and touchIME.



Advances in immunotherapies and targeted treatments for patients with bladder cancer: An update from ESMO 2022

WATCH NOW

touchTM
ONCOLOGY

This activity is funded by an independent medical education grant from Seagen Inc. and Astellas Pharma. This activity is jointly provided by USF Health and touchIME.

Current and emerging treatments for Chronic Myeloid Leukemia: What have we learnt from EHA 2022?



PROF. GIUSEPPE SAGLIO



PROF. FRANCOIS-XAVIER MAHON



PROF. DIETGER NIEDERWIESER

LEARN MORE



This non-accredited activity is funded by an independent medical education grant from Novartis and is provided by touchIME.

Selecting the optimal treatment for patients with chronic myeloid leukaemia after two prior lines of therapy

Learn more

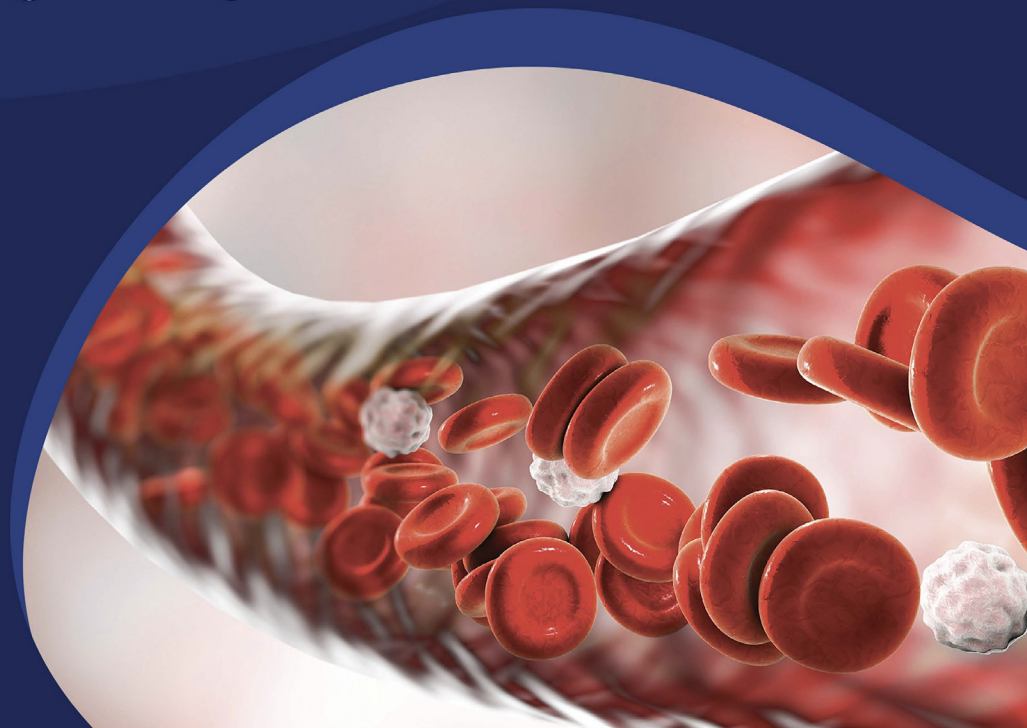


This activity is funded by an independent medical education grant from Novartis and is provided by touchIME.

Understanding the immunopathogenesis of cold agglutinin disease

What are the implications of new and emerging therapies?

Learn now



Join the **touchONCOLOGY** online community for FREE access to



Practical articles



Expert interviews



News and insights



Facebook



Twitter



Instagram



LinkedIn



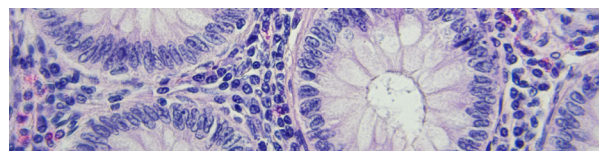
YouTube



Podcast

touchTM
ONCOLOGY

Visit touchONCOLOGY.com



Foreword

95 Foreword

Shaji K Kumar

Mayo Clinic, Rochester, MN, USA

Editorial

Multiple Myeloma

96 **ATLAS: Risk-adapted Triplet Maintenance with Carfilzomib, Lenalidomide and Dexamethasone – Still Shrugging?**

Joseph Franz¹ and Sagar Lonial²

1. Division of Hematology and Oncology, University of Pittsburgh Medical Center, Pittsburgh, PA, USA;

2. Department of Hematology and Medical Oncology, Emory University, Atlanta, GA, USA

Reviews

Breast Cancer

98 **Management of Metastatic Triple-negative Breast Cancer: Focus on Targeted Therapies**

Jennifer C Keenan, Phoebe K Ryan, Arielle J Medford, Laura M Spring and Aditya Bardia

Massachusetts General Hospital, Harvard Medical School, Boston, MA, USA

Gastrointestinal Oncology

Colorectal Cancer

103 **Treatment Options in *BRAF*-mutant Metastatic Colorectal Cancer**

Marco Cefali,¹ Maria Celeste Palmarocchi¹ and Sara De Dosso^{1,2}

1. Oncology Institute of Southern Switzerland, EOC, Bellinzona, Switzerland; 2. Università della Svizzera Italiana, Lugano, Switzerland

Diagnostics and Screening

107 **Targets, Therapies and the Role of Serial Biopsies for Prognostication and Assessing Changes to Tumour Biology in Oesophageal and Oesophagogastric Junction Cancers**

Michael LaPelusa,¹ Muhammad Hashim Hayat¹ and Michael K Gibson²

1. Department of Internal Medicine, Vanderbilt University Medical Center, Nashville, TN, USA; 2. Division of Hematology and Oncology, Department of Internal Medicine, Vanderbilt University Medical Center/Vanderbilt-Ingram Cancer Center, Nashville, TN, USA

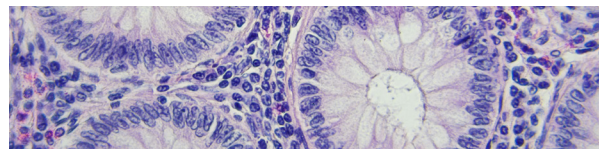
Genitourinary Oncology

Bladder Cancer

113 **Frontiers in Non-metastatic, Muscle-invasive Bladder Cancer**

Kana T Lucero,¹ James Yoo² and Chethan Ramamurthy²

1. Department of Internal Medicine, UT Health San Antonio, San Antonio, TX, USA; 2. Division Hematology-Oncology, Mays Cancer Center UT Health San Antonio, San Antonio, TX, USA



Reviews

Genitourinary Oncology

Prostate Cancer

120 Is Triple Therapy the New Standard for Metastatic Hormone-sensitive Prostate Cancer?

Joanna Hack and Simon J Crabb

Southampton Clinical Trials Unit, University of Southampton, Southampton General Hospital, Southampton, UK

Head and Neck Cancer

125 Clinical Utility of Human Papillomavirus Circulating Tumour DNA in Human Papillomavirus-positive Head and Neck Squamous Cell Carcinomas

Karen M Yun and Ezra Cohen

Department of Hematology-Oncology, Moores Cancer Center, UC San Diego Health, La Jolla, CA, USA

Haematological Malignancies

Leukaemia

130 Advances and Future Goals in Acute Myeloid Leukaemia Therapy

Gianfranco Bittar,¹ Diana De Oliveira-Gomes¹ and Gustavo Rivero¹⁻³

1. Baylor St. Luke's Medical Center, Houston, TX, USA; 2. Section of Hematology and Oncology, Department of Medicine, Baylor College of Medicine, Houston, TX, USA; 3. The Dan L Duncan Comprehensive Cancer Center, Baylor College of Medicine, Houston, TX, USA

Multiple Myeloma

139 Oral Therapies for Multiple Myeloma

Sachi Singhal¹ and Shaji Kumar²

1. Internal Medicine, Crozer-Chester Medical Center, Upland, PA, USA; 2. Division of Hematology, Mayo Clinic, Rochester, MN, USA

Supportive Cancer Care

152 Trilaciclib: A First-in-class Therapy to Reduce Chemotherapy-induced Myelosuppression

Joanna A Young¹ and Antoinette R Tan²

1. Levine Cancer Institute, Atrium Health, Charlotte, NC, USA; 2. Section of Breast Medical Oncology, Department of Solid Tumor Oncology and Investigational Therapeutics, Levine Cancer Institute, Atrium Health, Charlotte, NC, USA