

**Adverse event identification
and management in locally
advanced/metastatic
urothelial carcinoma**

Disclaimer

- *Unapproved products or unapproved uses of approved products may be discussed by the faculty; these situations may reflect the approval status in one or more jurisdictions*
- *The presenting faculty have been advised by USF Health and touchIME to ensure that they disclose any such references made to unlabelled or unapproved use*
- *No endorsement by USF Health and touchIME of any unapproved products or unapproved uses is either made or implied by mention of these products or uses in USF Health and touchIME activities*
- *USF Health and touchIME accept no responsibility for errors or omissions*

Expert panel



Dr Axel Merseburger

Urologist and Professor of Urology
University Hospital Schleswig-Holstein
Campus Lübeck, Germany



Dr André Fay

Professor of Medicine
PUCRS School of Medicine
Porto Alegre, Brazil



Ms Maria Lapuente

Lead Oncology Research Nurse
St Bartholomew's Hospital
London, UK



Agenda

Identifying and managing the possible adverse events associated with:

Antibody–drug conjugates

FGFR inhibitors

Immune checkpoint inhibitors

ESMO and NCCN guidelines: Targeted agents and immunotherapy in LA/m urothelial carcinoma^{1,2}

Antibody–drug conjugates

Enfortumab vedotin Second line

Sacituzumab govitecan Subsequent lines (NCCN)

FGFR inhibitors

Erdafitinib Second line

PD-1/PD-L1 inhibitors

Atezolizumab First line (NCCN/ESMO); second line (ESMO)

Avelumab Maintenance


Nivolumab Second line (NCCN)

Pembrolizumab First and second line


ESMO, European Society for Medical Oncology; FGFR, fibroblast growth factor receptor; LA/m, locally advanced or metastatic;

NCCN, National Comprehensive Cancer Network; PD-1, programmed cell death protein 1; PD-L1, programmed death ligand 1.

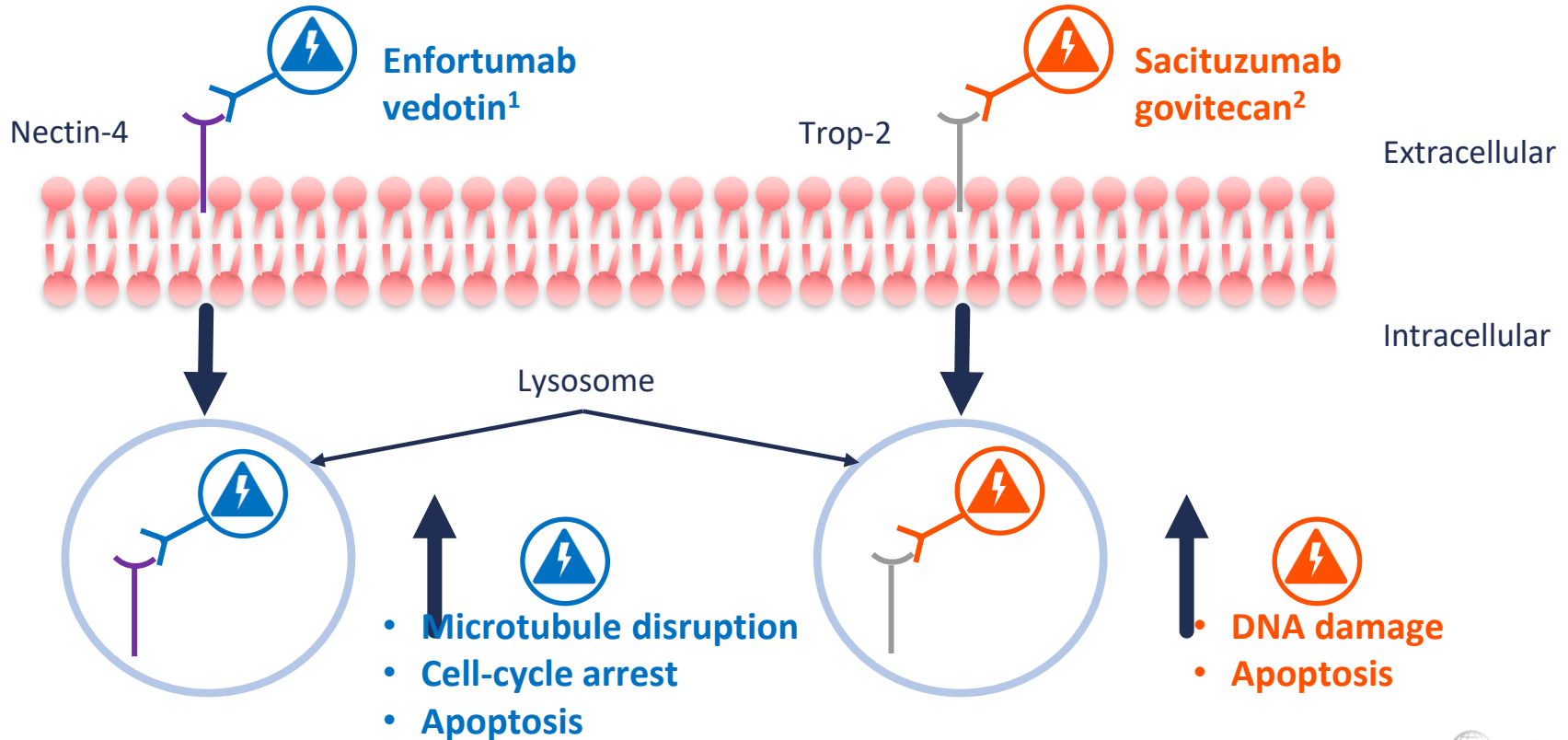
1. Powles T, et al. *Ann Oncol.* 2022;33:244–58; 2. NCCN. Bladder Cancer V2.2023. Available at: www.nccn.org/professionals/physician_gls/pdf/bladder.pdf (accessed 10 May 2023).



**Identifying and managing the possible
adverse events associated with
antibody–drug conjugates**



Mechanism of action of antibody–drug conjugates

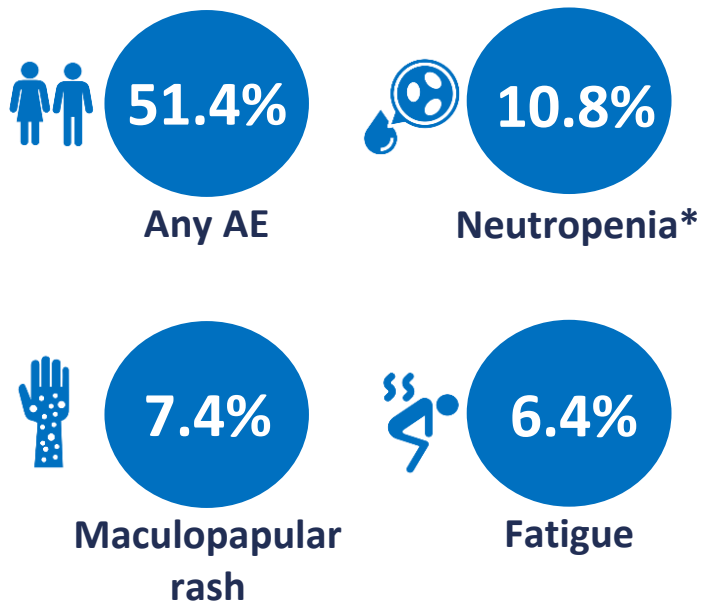


Trop-2, trophoblastic cell surface antigen 2.

1. Stecca C, et al. *Ther Adv Med Oncol.* 2021;13:1–18; 2. Hayashi T, Hinata N. *Int J Urol.* 2022;29:1100–8.

Enfortumab vedotin adverse event profile

Common AEs grade ≥ 3 ¹



Additional AEs of special interest²



Peripheral neuropathy



Skin reactions



Ocular



Hyperglycaemia

*Neutrophil count decreased has been recoded to neutropenia.
AE, adverse event.

1. Powles T, et al. *N Engl J Med*. 2021;384:1125–35; 2. EMA. Enfortumab vedotin SmPC. Available at: www.ema.europa.eu/en (accessed 10 May 2023).

Sacituzumab govitecan adverse event profile*

Common AEs grade ≥ 3 ¹



34%

Neutropenia[†]



17%

Leukopenia



14%

Anaemia



10%

Febrile
neutropenia

Additional AEs of special interest²



Diarrhoea



Nausea and
vomiting



Hypersensitivity

*Sacituzumab govitecan is not included in current ESMO guidelines but is suggested as a recommended regimen for subsequent-line therapy in the NCCN guidelines;³

[†]Neutrophil count decreased has been recoded to neutropenia.

AE, adverse event; ESMO, European Society for Medical Oncology; NCCN, National Comprehensive Cancer Network.

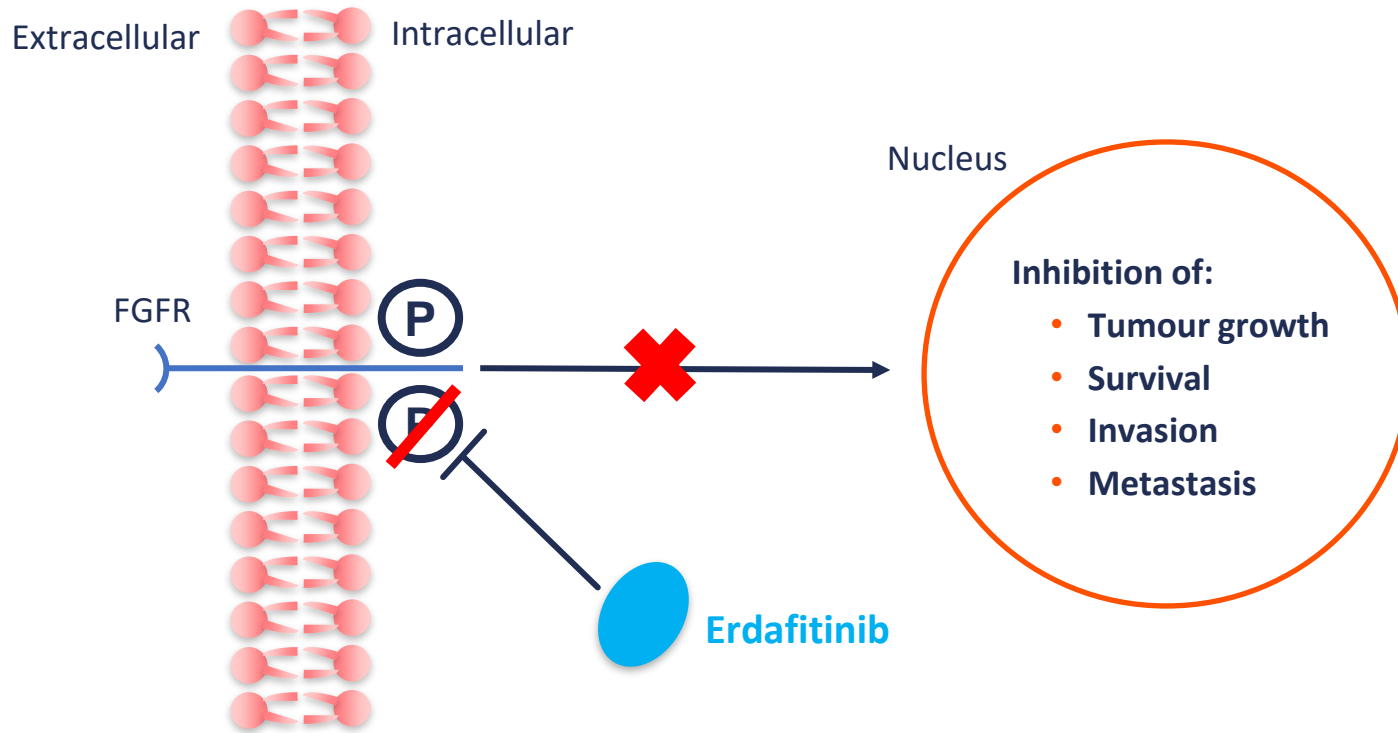
1. Tagawa ST, et al. *J Clin Oncol*. 2021;39:2474–85; 2. FDA. Sacituzumab govitecan PI. Available at: www.accessdata.fda.gov/drugsatfda_docs/label/2023/761115s035lbl.pdf (accessed 10 May 2023); 3. NCCN. Bladder Cancer V2.2023. Available at: www.nccn.org/professionals/physician_gls/pdf/bladder.pdf (accessed 10 May 2023).



**Identifying and managing the
possible adverse events associated
with FGFR inhibitors**

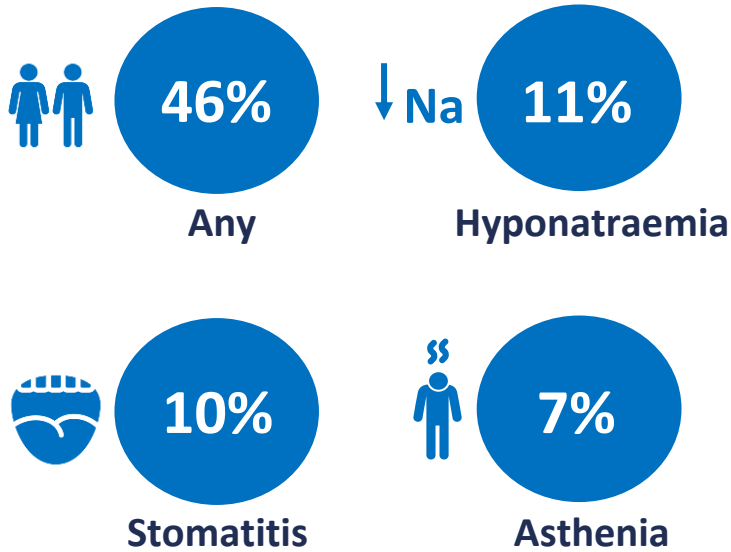


Mechanism of action of erdafitinib



Erdafitinib adverse event profile

Common AEs grade ≥ 3 ¹



Additional AEs of special interest²



CSR/RPED



Nail and skin reactions



Hyperphosphataemia

AE, adverse event; CSR/RPED, central serous retinopathy/retinal pigment epithelial detachment.

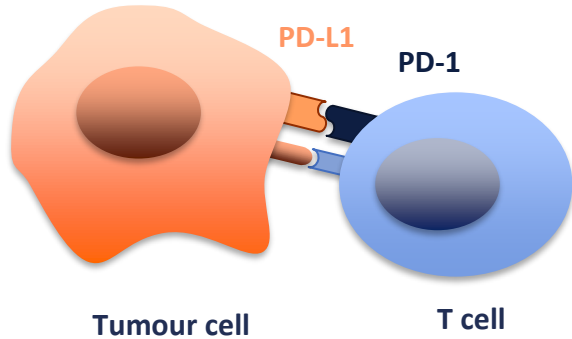
1. Lorient Y, et al. *N Engl J Med*. 2019;381:338–48; 2. FDA. Erdafitinib PI. Available at: www.accessdata.fda.gov/drugsatfda_docs/label/2019/212018s000lbl.pdf (accessed 10 May 2023).



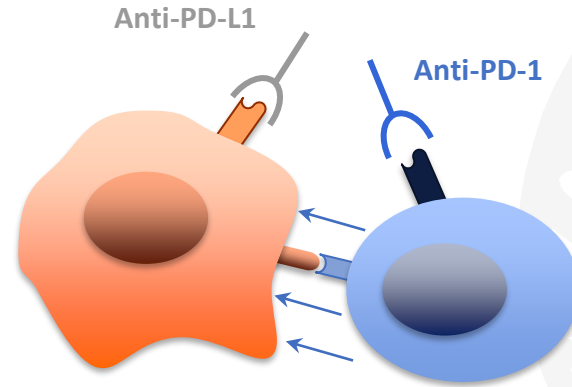
**Identifying and managing the possible
adverse events associated with
immune checkpoint inhibitors**



Mechanism of action of PD-1/PD-L1 inhibitors

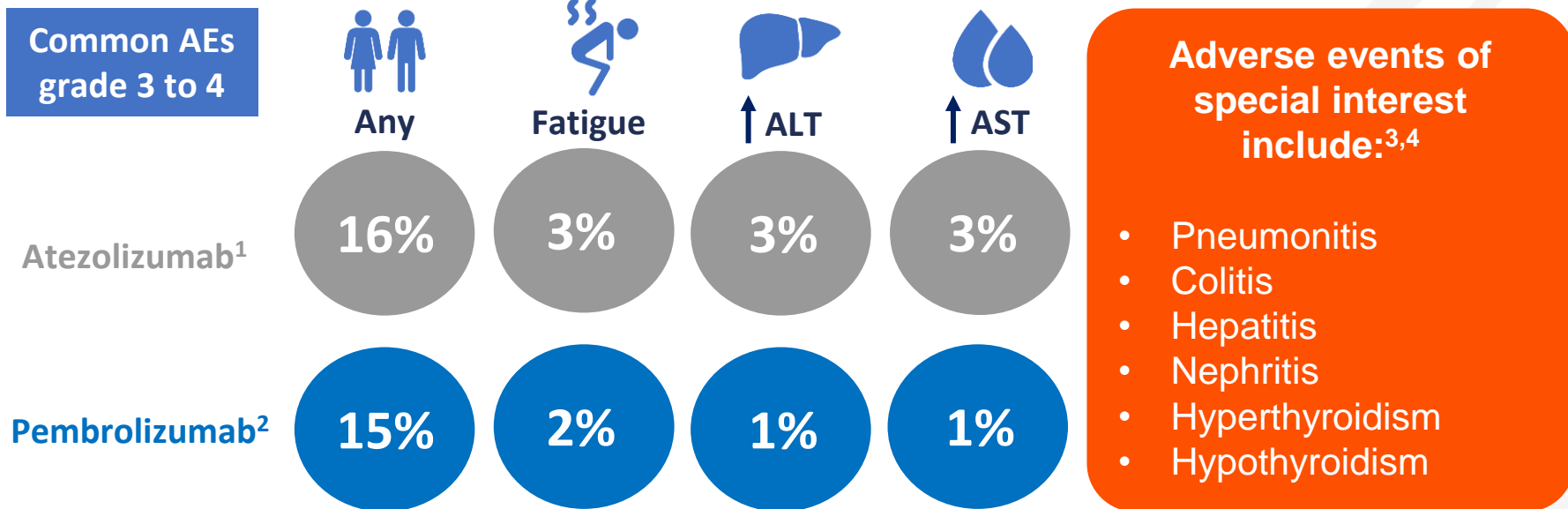


Inhibition of anti-tumour T-cell response



Restored anti-tumour T-cell response

Atezolizumab and pembrolizumab adverse event profiles

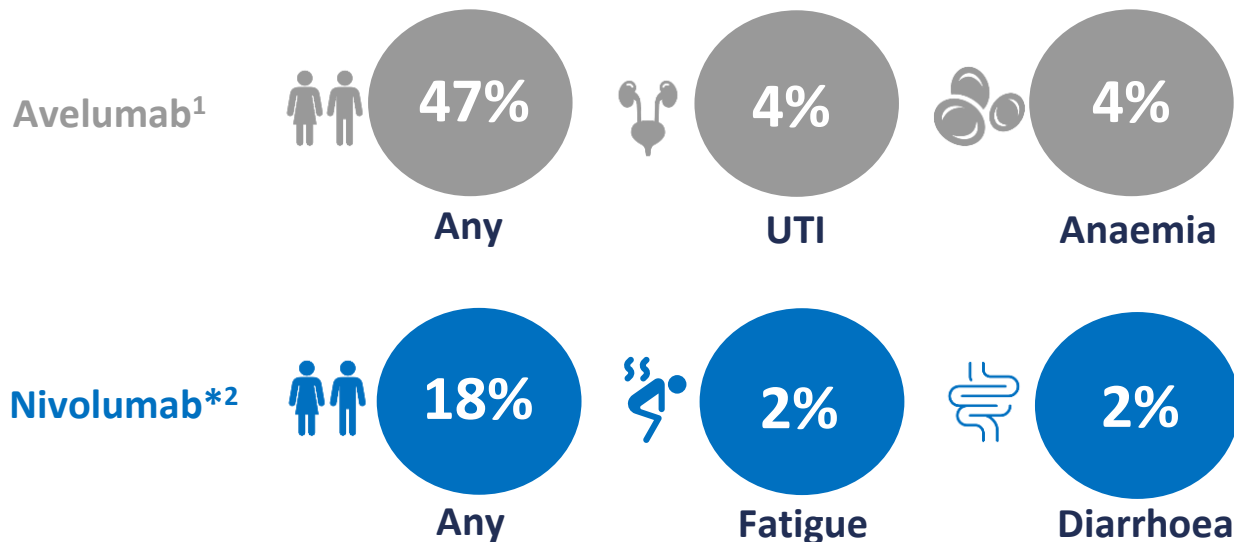


AE, adverse event; ALT, alanine transaminase; AST, aspartate aminotransferase.

1. Balar AV, et al. *Lancet*. 2017;389:67–76; 2. Balar AV, et al. *Lancet Oncol*. 2017;18:1483–92; 3. EMA. Atezolizumab SmPC. Available at: www.ema.europa.eu/en (accessed 10 May 2023); 4. EMA. Pembrolizumab SmPC. Available at: www.ema.europa.eu/en (accessed 10 May 2023).

Avelumab and nivolumab adverse event profiles

Common AEs grade 3 to 4



Adverse events of special interest include:³

- Pneumonitis
- Colitis
- Hepatic complications
- Hypothyroidism

*Nivolumab is not included in current ESMO guidelines but is suggested as an alternative preferred regimen for second-line therapy in the NCCN guidelines.⁴

AE, adverse event; ESMO, European Society for Medical Oncology; NCCN, National Comprehensive Cancer Network; UTI, urinary tract infection.

1. Powles T, et al. *N Engl J Med.* 2020;383:1218–30; 2. Sharma P, et al. *Lancet Oncol.* 2017;18:312–22; 3. Wang Y, et al. *JAMA Oncol.* 2019;5:1008–19;

4. NCCN. Bladder Cancer V2.2023. Available at: www.nccn.org/professionals/physician_gls/pdf/bladder.pdf (accessed 10 May 2023).