A detailed 3D illustration of a blood vessel. The foreground is filled with numerous red blood cells, some in sharp focus and others blurred. Several cancer cells are also present, characterized by their irregular, bumpy surfaces and bright red, glowing nuclei. The background is a soft, out-of-focus blue and purple, suggesting a microscopic environment.

# touchREVIEWS

## in Oncology & Haematology

VOLUME 19 • ISSUE 2 • 2023

EDITOR-IN-CHIEF: AXEL S MERSEBURGER

**Findings from the XTEND-Kids Study: Efanesoctocog Alfa for Severe Haemophilia A in Children**

Jillian Simoneau and Angela C Weyand

**Targeting Mutant IDH to Treat Low-grade Glioma**

Katherine B Peters

**Zolbetuximab: An Investigational First-Line Treatment for CLDN18.2-positive, HER2-negative Gastric and Gastro-oesophageal Junction Cancer**

Joud Al Karmi and Michael K Gibson

**Quality and Reliability of Spanish-language YouTube Videos on Breast Cancer**

Fernando C Diaz, Michael B LaPelusa, Hansapani Rodrigo et al.

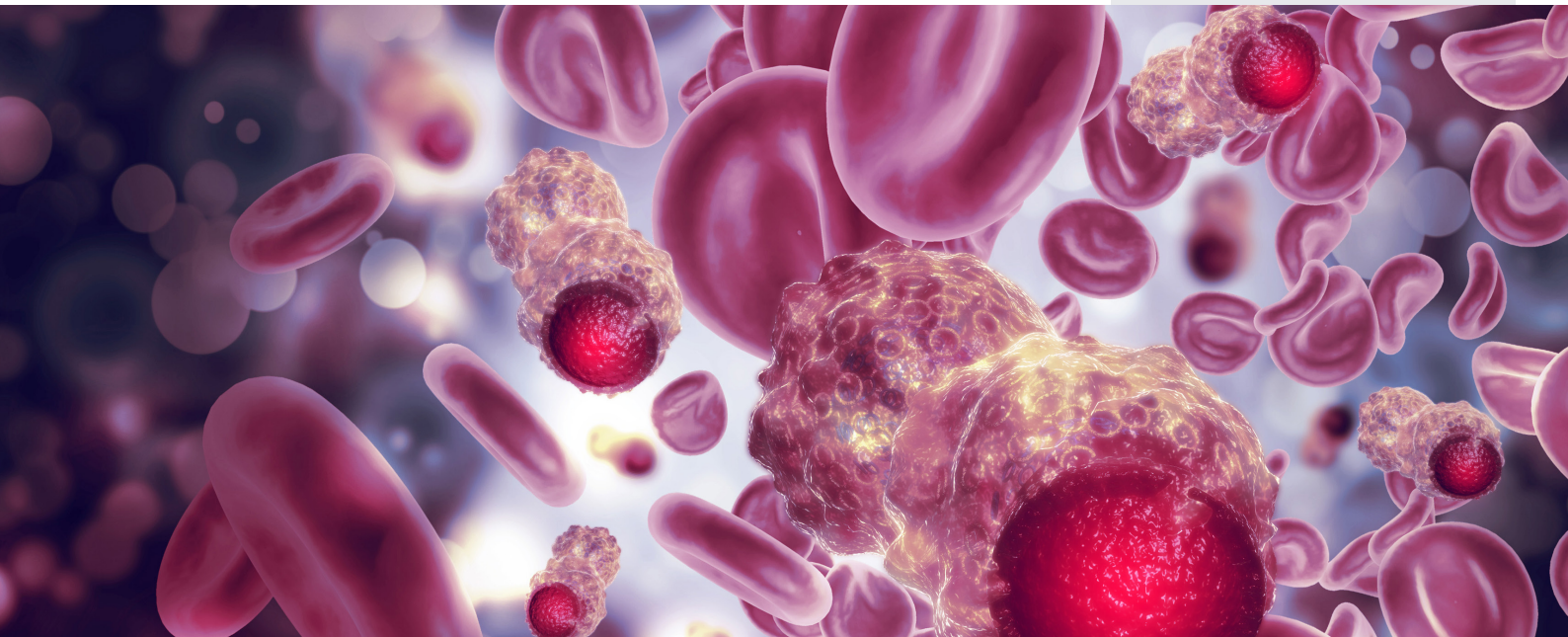
[www.touchONCOLOGY.com](http://www.touchONCOLOGY.com)

# touchREVIEWS

## in Oncology & Haematology

Volume 19 • Issue 2 • 2023

Cover image: Cancer cells  
By Crystal light | © stock.adobe.com



touchREVIEWS in Oncology & Haematology wishes to thank the organizations below for their assistance. This does not constitute any official endorsement.



**Senior Editorial Director**  
Gina Furnival

**Editorial Directors**  
Katey Gabrysch  
Sophie Nickelson  
Carla Junker

**Commissioning Editors**  
Victoria Jones  
Shanice Allen

**Editorial Workflow**  
Lisa Glass  
Heather Hall  
Marianna Mignani  
Danielle Crosby

**Head of Medical & Editorial**  
Nicola Cartridge  
E: [nicola.cartridge@touchmedicalmedia.com](mailto:nicola.cartridge@touchmedicalmedia.com)  
T: +44 (0)20 7193 3186

**CEO & Managing Director**  
Barney Kent  
E: [barney.kent@touchmedicalmedia.com](mailto:barney.kent@touchmedicalmedia.com)  
T: +44 (0)20 7193 3009

**Head of Strategic Partnerships**  
Caroline Markham  
E: [caroline.markham@touchmedicalmedia.com](mailto:caroline.markham@touchmedicalmedia.com)  
T: +44 (0)20 7193 3704

All information obtained by Touch Medical Media and each of the contributors from various sources is as current and accurate as possible. However, due to human or mechanical errors, Touch Medical Media and the contributors cannot guarantee the accuracy, adequacy or completeness of any information, and cannot be held responsible for any errors or omissions, or for the results obtained from the use thereof. Where opinion is expressed, it is that of the authors and does not necessarily coincide with the editorial views of Touch Medical Media. Statistical and financial data in this publication have been compiled on the basis of factual information and do not constitute any investment advertisement or investment advice. For the avoidance of doubt, the information contained in this publication is intended for use by licensed medical professionals. The content should not be considered medical advice, diagnosis or treatment recommendations.

© 2023 Touch Medical Media Services Limited, a private limited company registered in England and Wales at Lancashire Gate, 21 Tiviot Dale, Stockport, Cheshire, SK1 1TD with registered number 12930327. All rights reserved. eISSN: 2752-5481



[www.touchmedicalmedia.com](http://www.touchmedicalmedia.com)

# touchREVIEWS

## in Oncology & Haematology

### Editors-in-Chief

**Axel S Merseburger**

Department of Urology, Campus Lübeck, University Hospital Schleswig-Holstein, Lübeck, Germany

**Matti S Aapro**

Multidisciplinary Oncology Institute, Genolier, Switzerland

**Eleni Andreopoulou**

University of Texas MD Anderson Cancer Center, Houston, TX, USA

### Editorial Board

**Mohammad Ammad-Ud-Din**

Rochester General Hospital, Rochester, NY, USA

**Ahmad Awada**

Medical Oncology Clinic, Jules Bordet Institute, Brussels, Belgium

**Wadie F Bahou**

State University of New York, Stony Brook, NY, USA

**Tanios Bekaii-Saab**

Mayo Clinic, Phoenix, AZ, USA

**Raffaele Califano**

Department of Medical Oncology, The Christie NHS Foundation Trust, Manchester, UK

**Ezra Cohen**

University of Chicago Medical Center, Georgetown University, Chicago, IL, USA

**Jorge Cortes**

Georgia Cancer Center, Augusta University, Augusta, GA, USA

**Véronique Diéras**

Department of Medical Oncology, Centre Eugène Marquis, Rennes, France

**Massimo Dominici**

Medical Oncology, University Hospital of Modena, Modena, Italy

**Martin J Edelman**

Fox Chase Cancer Center, Philadelphia, PA, USA

**Dean A. Fennell**

Leicester Cancer Research Centre, Genetics & Genome Biology, University of Leicester, UK

**Willem E Fibbe**

Department of Immuno-haematology and Blood Transfusion, Leiden University Medical Center, Leiden, Netherlands

**Robin Foà**

Institute of Hematology, 'La Sapienza' University of Rome, Rome, Italy

**Paolo A Ascierto**

Unit of Melanoma, ational Tumor Institute 'Fondazione G Pascale', Naples, Italy

**John L Marshall**

Lombardi Comprehensive Cancer Center, Washington, DC, USA

**Michael K Gibson**

Vanderbilt University Medical Center, Vanderbilt-Ingram Cancer Center, Nashville, TN, USA

**Charlie Gourley**

Cancer Research UK Edinburgh Center; Nicola Murray Centre for Ovarian Cancer Research, The University of Edinburgh, Scotland, UK

**Axel Grothey**

West Cancer Center, Germantown, TN, USA

**Martin Hutchings**

The Finsen Centre, National Hospital, Copenhagen University Hospital, Copenhagen, Denmark

**Claudine Isaacs**

Lombardi Comprehensive Cancer Center, Georgetown University, Chicago, IL, USA

**Elias Jabbour**

University of Texas MD Anderson Cancer Center, Houston, TX, USA

**Ken Kato**

National Cancer Center Hospital, Tokyo, Japan

**Daniel Kelly**

Royal College of Nursing, School of Healthcare Sciences, Cardiff University, Cardiff, UK

**Ticiana Leal**

Emory University School of Medicine, Atlanta, GA, USA

**Charles D Lopez**

Oregon Health & Science University, Portland, OR, USA

**Domenica Lorusso**

Catholic University of Rome, Rome, Italy

**Mario Mandalà**

Department of Oncology and Haematology, Papa Giovanni XXIII Cancer Center Hospital, Bergamo, Italy

**Pier Mannuccio Mannucci**

Maggiore University Hospital of Mila; Angelo Bianchi Bonomi Haemophilia and Thrombosis Centre, Milan, Italy

**David G Mutch**

Washington University School of Medicine, St Louis, MO, USA

**Maurice Péro**

Thoracic Oncology, Medical Oncology Department of Léon Bérard Cancer Center, Lyon, France

**John L Marshall**

MedStar Georgetown University Hospital, Washington, DC, USA

**Bruce Minsky**

University of Texas MD Anderson Cancer Center, Houston, TX, USA

**Michael J Morris**

Memorial Sloan Kettering Cancer Center, New York, NY, USA

**Suchita Pakkala**

Emory University School of Medicine, Atlanta, GA, USA

**Bernardo Rapoport**

The Medical Oncology Centre of Rosebank, Johannesburg, South Africa

**Andrew I Schafer**

Weill Cornell Medical College, New York, NY, USA

**Emma Searle**

The Christie Hospital NHS Foundation Trust, Manchester, UK

**Lena Sharp**

Regional Cancer Center, Stockholm, Sweden

**Gerard Socié**

Department of Bone Marrow Transplantation, Hospital Saint-Louis, Paris, France

**Sara M Tolaney**

Department of Medical Oncology, Dana-Farber Cancer Institute, Boston, MA, USA

**Ulka Vaishampayan**

Wayne State University, Detroit, MI, USA

**Benjamin Weinberg**

Ruesch Center for the Cure of Gastrointestinal Cancers; Lombardi Comprehensive Cancer Center, Washington, DC, USA

**Antoinette J Wozniak**

Wayne State University; Barbara Ann Karmanos Cancer Institute, Detroit, MI, USA

# touchREVIEWS

## in Oncology & Haematology

Established: January 2005 Frequency: Bi-annual  
Current edition: Volume 19 Issue 2, 2023

### Aims and scope

- *touchREVIEWS in Oncology & Haematology* enables time-pressured physicians to stay abreast of major advances and opinions in oncology and haematology practice.
- *touchREVIEWS in Oncology & Haematology* comprises balanced and comprehensive articles written by leading authorities, addressing the most important and salient developments in the oncology and haematology fields.
- *touchREVIEWS in Oncology & Haematology* endeavours to support physicians, clinicians and related healthcare professionals in continuously developing their knowledge, effectiveness and productivity. The editorial policy has been designed to encourage discussion among this peer group.
- Comprehensive bibliographies for each article mean that *touchREVIEWS in Oncology & Haematology* is an informative and valuable reference tool for use throughout the year.
- All articles are subject to peer review, and must adhere to the ICJME, GPP 2022, and COPE guidelines.

### Structure and format

- *touchREVIEWS in Oncology & Haematology* is a peer-reviewed, free-to-access, bi-annual journal comprising review articles, editorials, special reports and original research.
- The structure of each edition of the publication comprises section categories determined by the Editor. The degree of coverage assigned to each category is the decision of the Editor, and in part reflects the views of the Editorial Board.
- All articles state any author disclosures along with any funding, financial support and/or medical writing assistance.
- Each edition of *touchREVIEWS in Oncology & Haematology* is published in full, online at: [www.touchONCOLOGY.com](http://www.touchONCOLOGY.com)

### Editorial expertise

*touchREVIEWS in Oncology & Haematology* is supported by various levels of expertise:

- Guidance from an Editorial Board consisting of leading authorities from a variety of oncology and haematology disciplines.
- Invited contributors who are recognized authorities in their respective fields.
- Peer review – conducted by experts appointed for their experience and knowledge of a specific topic.
- An experienced team of editors and technical editors.

### Peer review

- On submission, all articles are assessed by the Editor to determine their suitability for inclusion and appropriateness for peer review.
- The Editor identifies appropriate reviewers, who are selected on the basis of their specialist knowledge in the relevant area, following consultation with a member of the Editorial Board where necessary.
- We aim to have the final peer review decision within 4 weeks.
- Following review, papers are either accepted without modification, returned to the author(s) to incorporate required changes, or not accepted for publication.

- The Editor reserves the right to accept or reject any proposed amendments on the advice of the Editorial Board and reviewers.

### Submissions and instructions for authors

- The Editor commissions articles with guidance from the Editorial Board and unsolicited articles are welcomed.
- The Editor is always keen to hear from authors wishing to discuss potential submissions, and will give due consideration to any proposals. Please contact the Editor for further details: [editorialmanager@touchmedicalmedia.com](mailto:editorialmanager@touchmedicalmedia.com)
- Instructions for authors are available on the website: [www.touchONCOLOGY.com](http://www.touchONCOLOGY.com)

### Distribution and readership

*touchREVIEWS in Oncology & Haematology* is distributed globally, on a bi-annual basis, through controlled circulation to senior professionals in the field globally.

### Free-to-access

All articles are free-to-access, which allows anyone in the oncology and haematology field to download published articles free of charge.

### Abstracting and indexing

*touchREVIEWS in Oncology & Haematology* is abstracted, indexed and listed in Embase, EBSCO, Genamics JournalSeek, Google Scholar, IndexCopernicus and Summon by Serial Solutions.

### Copyright

Authors transfer copyright of their article to Touch Medical Media, who publish the article as free-to-access to registered users.

### Online resources

[www.touchmedicalmedia.com](http://www.touchmedicalmedia.com) provides clinicians and other industry professionals with a free resources across nine therapy areas including cardiology, endocrinology, haematology, immunology, infectious diseases, neurology, oncology, ophthalmology and respiratory and pulmonary medicine.

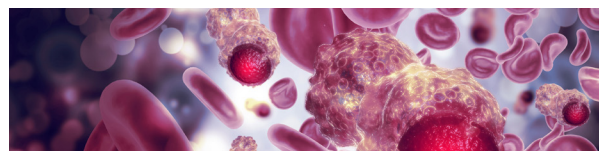
### Society partners

touchONCOLOGY has developed very valuable partnerships with the most respected not-for-profit medical societies both in Europe and the USA. These partnerships are key as touchONCOLOGY.com helps to promote awareness of these medical societies whilst also providing free-to-access, peer-reviewed articles and multimedia content to society members, which ensures that the industry is kept up to date with the latest cutting-edge content and opinion from world-renowned doctors.

### About Touch Medical Media

Touch Medical Media publishes a rich and diverse portfolio of free-to-access, peer-reviewed journals across the clinical and pharmaceutical arenas. Touch Medical Media aims to assist in the education and practice of healthcare and pharmaceutical professionals. □





## Foreword

### 1 Foreword

**Axel Merseburger**

*Department of Urology, Universitätsklinikum Schleswig-Holstein, Campus Lübeck, Germany*

## Editorial

### Haematology

### 2 Findings from the XTEND-Kids Study: Efanesoctocog Alfa for Severe Haemophilia A in Children

**Jillian Simoneau and Angela C Weyand**

*Department of Pediatrics, Division of Pediatric Hematology Oncology, University of Michigan Medical School, Ann Arbor, MI, USA*

### Neuro-oncology

### 4 Temozolomide for Paediatric High-Grade Glioma: Time for a Rethink?

**Jordan Staunton<sup>1,2</sup> and David S Ziegler<sup>1,2,3</sup>**

*1. Kids Cancer Centre, Sydney Children's Hospital, Randwick, NSW, Australia; 2. Children's Cancer Institute, Lowy Cancer Research Centre, UNSW Sydney, Sydney, NSW, Australia; 3. School of Clinical Medicine, UNSW Medicine & Health, UNSW Sydney, Sydney, NSW, Australia*

## Reviews

### Neuro-oncology

### 7 Targeting Mutant IDH to Treat Low-grade Glioma

**Katherine B Peters**

*Departments of Neurosurgery and Neurology, Duke University, Durham, NC, USA*

### Breast Cancer

### 12 Sacituzumab Govitecan for the Treatment of HR+/HER2- Breast Cancer in Heavily Pre-treated Patients

**Tylan Lucas,<sup>1</sup> Joshua Chan<sup>2</sup> and Neha Chopra<sup>1</sup>**

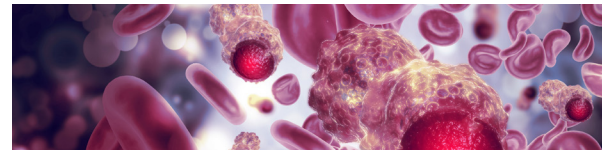
*1. Academic Oncology, Royal Free Hampstead NHS Trust: Royal Free London NHS Foundation Trust, Royal Free London NHS Foundation Trust, London, UK, London, UK; 2. Oncology, University College London Medical School, London, UK*

### Gastrointestinal Cancer

### 16 Zolbetuximab: An Investigational First-Line Treatment for CLDN18.2-positive, HER2-negative Gastric and Gastro-oesophageal Junction Cancer

**Joud Al Karmi<sup>1</sup> and Michael K Gibson<sup>2,3</sup>**

*1. Faculty of Medicine, University of Jordan, Amman, Jordan; 2. Division of Hematology-Oncology, Department of Medicine, Vanderbilt University Medical Center, Nashville, TN, USA; 3. Vanderbilt-Ingram Cancer Center, Nashville, TN, USA*



**22 Incorporation of Combination Immunotherapy into the Treatment Paradigms of Gastrointestinal Cancers**

**Jeremy D Kratz<sup>1,2,3,4</sup> and Nataliya V Uboha<sup>1,2</sup>**

*1. Division of Hematology, Medical Oncology and Palliative Care, Department of Medicine, University of Wisconsin School of Medicine and Public Health, University of Wisconsin, Madison, WI, USA; 2. University of Wisconsin Carbone Cancer Center, Madison, WI, USA; 3. William S. Middleton Veterans Administration Health System, Madison, WI, USA; 4. Center for Human Genomics and Precision Medicine, University of Wisconsin, Madison, WI, USA*

**Haematology**

**29 Cell- based Genetic Therapy for the Induction of Foetal Haemoglobin in Sickle Cell Disease and Transfusion-dependent  $\beta$ -thalassaemia**

**Martin H Steinberg**

*Department of Medicine, Division of Hematology and Medical Oncology, Center of Excellence for Sickle Cell Disease, Boston University Chobanian & Avedisian School of Medicine and Boston Medical Center, Boston, MA, USA*

**Original Research**

**Breast Cancer**

**33 Quality and Reliability of Spanish-language YouTube Videos on Breast Cancer**

**Fernando C Diaz,<sup>1</sup> Michael B LaPelusa,<sup>2</sup> Hansapani Rodrigo,<sup>3</sup> Ismael Polo Perez,<sup>4</sup> Dailis B Corria Cedeno<sup>1</sup> and Henry T Kwang<sup>4</sup>**

*1. Lineberger Comprehensive Cancer Center, University of North Carolina at Chapel Hill, Chapel Hill, NC, USA; 2. Division of Cancer Medicine, MD Anderson Cancer Center, Houston, TX, USA; 3. School of Mathematical and Statistical Sciences, University of Texas Rio Grande Valley, Edinburg, TX, USA; 4. Department of Internal Medicine, University of Texas Rio Grande Valley School of Medicine, Harlingen, TX, USA*