

# touchREVIEWS

## in Oncology & Haematology

VOLUME 20 • ISSUE 1 • 2024

EDITOR-IN-CHIEF: AXEL S MERSEBURGER

**A New Frontier in the Treatment of Epidermal Growth Factor Receptor-mutated Non-Small-Cell Lung Cancer: Amivantamab-vmjw and Chemotherapy**

Miguel García-Pardo and Pilar Garrido

**Dostarlimab for the Treatment of Endometrial Cancer: A Review**

Chelsea E Stewart and Dana Chase

**Immunotherapeutic Advances in the Treatment of Merkel Cell Carcinoma**

Ruben J Cruz-Chamorro, Alberic Gan, John M Bryant and Evan Wuthrick

**Trastuzumab Deruxtecan for the Treatment of HER2-low Advanced or Metastatic Breast Cancer**

Toshinari Yamashita

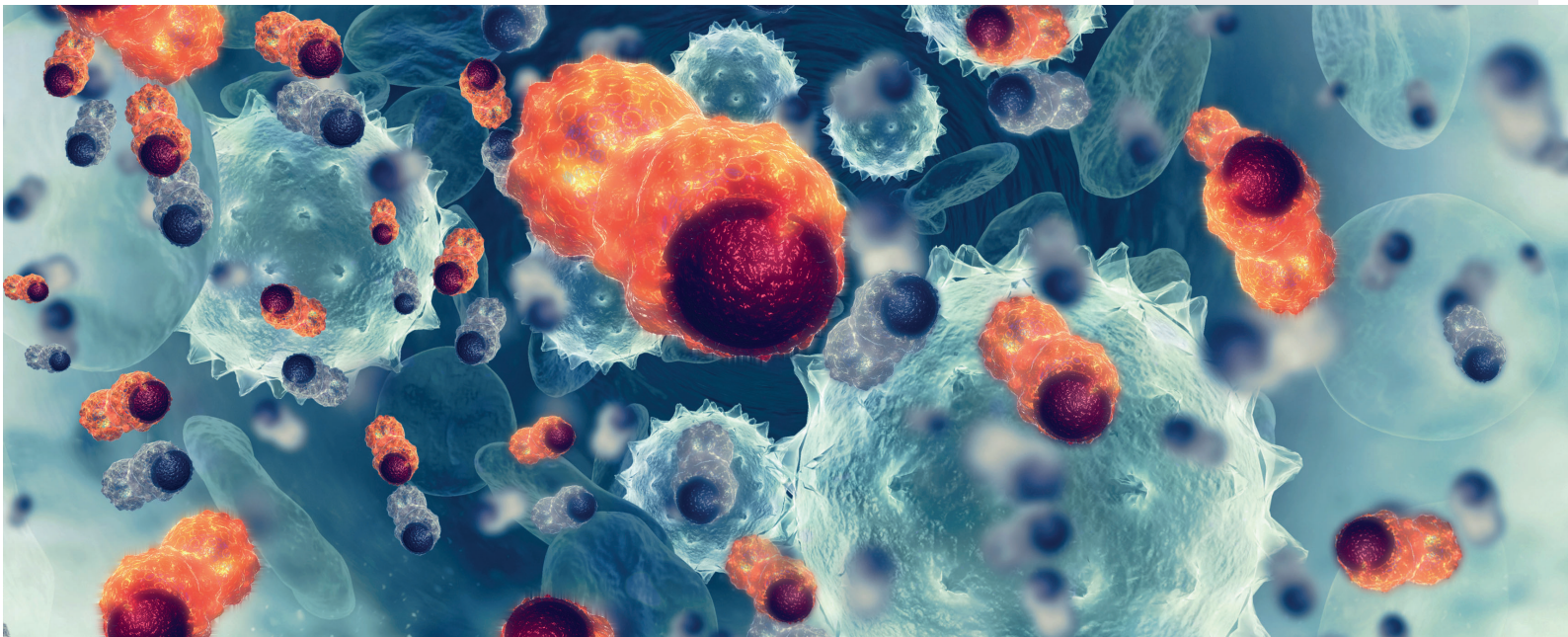
[www.touchONCOLOGY.com](http://www.touchONCOLOGY.com)

# touchREVIEWS

## in Oncology & Haematology

Volume 20 • Issue 1 • 2024

Cover image: Cancer cells  
By Crystal light | © stock.adobe.com



touchREVIEWS in Oncology & Haematology wishes to thank the organizations below for their assistance. This does not constitute any official endorsement.



**Senior Editorial Director**  
Gina Furnival

**Editorial Directors**  
Katey Gabrysch  
Carla Junkier  
Sophie Nickelson

**Editorial Workflow**  
Heather Hall

**Head of Medical & Editorial**  
Nicola Cartridge  
E: nicola.cartridge@touchmedicalmedia.com  
T: +44 (0)20 7193 3186

**CEO & Managing Director**  
Barney Kent  
E: barney.kent@touchmedicalmedia.com  
T: +44 (0)20 7193 3009

**Head of Strategic Partnerships**  
Caroline Markham  
E: caroline.markham@touchmedicalmedia.com  
T: +44 (0)20 7193 3704

All information obtained by Touch Medical Media and each of the contributors from various sources is as current and accurate as possible. However, due to human or mechanical errors, Touch Medical Media and the contributors cannot guarantee the accuracy, adequacy or completeness of any information, and cannot be held responsible for any errors or omissions, or for the results obtained from the use thereof. Where opinion is expressed, it is that of the authors and does not necessarily coincide with the editorial views of Touch Medical Media. Statistical and financial data in this publication have been compiled on the basis of factual information and do not constitute any investment advertisement or investment advice. For the avoidance of doubt, the information contained in this publication is intended for use by licensed medical professionals. The content should not be considered medical advice, diagnosis or treatment recommendations.

© 2024 Touch Medical Media Services Limited, a private limited company registered in England and Wales at Lancashire Gate, 21 Tiviot Dale, Stockport, Cheshire, SK1 1TD with registered number 12930327. All rights reserved. eISSN: 2752-5481

**touch™**  
**MEDICAL**  
**MEDIA**

[www.touchmedicalmedia.com](http://www.touchmedicalmedia.com)

# touchREVIEWS

## in Oncology & Haematology

### Editors-in-Chief

**Axel S Merseburger**

Department of Urology, Campus Lübeck, University Hospital Schleswig-Holstein, Lübeck, Germany

**Matti S Aapro**

Multidisciplinary Oncology Institute, Genolier, Switzerland

**Eleni Andreopoulou**

University of Texas MD Anderson Cancer Center, Houston, TX, USA

### Editorial Board

**Mohammad Ammad-Ud-Din**

Rochester General Hospital, Rochester, NY, USA

**Ahmad Awada**

Medical Oncology Clinic, Jules Bordet Institute, Brussels, Belgium

**Wadie F Bahou**

State University of New York, Stony Brook, NY, USA

**Tanios Bekaii-Saab**

Mayo Clinic, Phoenix, AZ, USA

**Raffaele Califano**

Department of Medical Oncology, The Christie NHS Foundation Trust, Manchester, UK

**Ezra Cohen**

University of Chicago Medical Center, Georgetown University, Chicago, IL, USA

**Jorge Cortes**

Georgia Cancer Center, Augusta University, Augusta, GA, USA

**Véronique Diéras**

Department of Medical Oncology, Centre Eugène Marquis, Rennes, France

**Massimo Dominici**

Medical Oncology, University Hospital of Modena, Modena, Italy

**Martin J Edelman**

Fox Chase Cancer Center, Philadelphia, PA, USA

**Dean A. Fennell**

Leicester Cancer Research Centre, Genetics & Genome Biology, University of Leicester, UK

**Willem E Fibbe**

Department of Immuno-haematology and Blood Transfusion, Leiden University Medical Center, Leiden, Netherlands

**Robin Foà**

Institute of Hematology, 'La Sapienza' University of Rome, Rome, Italy

**Paolo A Ascierto**

Unit of Melanoma, ational Tumor Institute 'Fondazione G Pascale', Naples, Italy

**John L Marshall**

Lombardi Comprehensive Cancer Center, Washington, DC, USA

**Michael K Gibson**

Vanderbilt University Medical Center, Vanderbilt-Ingram Cancer Center, Nashville, TN, USA

**Charlie Gourley**

Cancer Research UK Edinburgh Center; Nicola Murray Centre for Ovarian Cancer Research, The University of Edinburgh, Scotland, UK

**Axel Grothey**

West Cancer Center, Germantown, TN, USA

**Martin Hutchings**

The Finsen Centre, National Hospital, Copenhagen University Hospital, Copenhagen, Denmark

**Claudine Isaacs**

Lombardi Comprehensive Cancer Center, Georgetown University, Chicago, IL, USA

**Elias Jabbour**

University of Texas MD Anderson Cancer Center, Houston, TX, USA

**Ken Kato**

National Cancer Center Hospital, Tokyo, Japan

**Daniel Kelly**

Royal College of Nursing, School of Healthcare Sciences, Cardiff University, Cardiff, UK

**Ticiana Leal**

Emory University School of Medicine, Atlanta, GA, USA

**Charles D Lopez**

Oregon Health & Science University, Portland, OR, USA

**Domenica Lorusso**

Catholic University of Rome, Rome, Italy

**Mario Mandalà**

Department of Oncology and Haematology, Papa Giovanni XXIII Cancer Center Hospital, Bergamo, Italy

**Pier Mannuccio Mannucci**

Maggiore University Hospital of Milan; Angelo Bianchi Bonomi Haemophilia and Thrombosis Centre, Milan, Italy

**David G Mutch**

Washington University School of Medicine, St Louis, MO, USA

**Maurice Péro**

Thoracic Oncology, Medical Oncology Department of Léon Bérard Cancer Center, Lyon, France

**John L Marshall**

MedStar Georgetown University Hospital, Washington, DC, USA

**Bruce Minsky**

University of Texas MD Anderson Cancer Center, Houston, TX, USA

**Michael J Morris**

Memorial Sloan Kettering Cancer Center, New York, NY, USA

**Suchita Pakkala**

Emory University School of Medicine, Atlanta, GA, USA

**Bernardo Rapoport**

The Medical Oncology Centre of Rosebank, Johannesburg, South Africa

**Andrew I Schafer**

Weill Cornell Medical College, New York, NY, USA

**Emma Searle**

The Christie Hospital NHS Foundation Trust, Manchester, UK

**Lena Sharp**

Regional Cancer Center, Stockholm, Sweden

**Gerard Socié**

Department of Bone Marrow Transplantation, Hospital Saint-Louis, Paris, France

**Sara M Tolaney**

Department of Medical Oncology, Dana-Farber Cancer Institute, Boston, MA, USA

**Ulka Vaishampayan**

Wayne State University, Detroit, MI, USA

**Benjamin Weinberg**

Ruesch Center for the Cure of Gastrointestinal Cancers; Lombardi Comprehensive Cancer Center, Washington, DC, USA

**Antoinette J Wozniak**

Wayne State University; Barbara Ann Karmanos Cancer Institute, Detroit, MI, USA

# touchREVIEWS

## in Oncology & Haematology

Established: January 2005 Frequency: Bi-annual  
Current edition: Volume 20 Issue 1, 2024

### Aims and scope

- *touchREVIEWS in Oncology & Haematology* enables time-pressured physicians to stay abreast of major advances and opinions in oncology and haematology practice.
- *touchREVIEWS in Oncology & Haematology* comprises balanced and comprehensive articles written by leading authorities, addressing the most important and salient developments in the oncology and haematology fields.
- *touchREVIEWS in Oncology & Haematology* endeavours to support physicians, clinicians and related healthcare professionals in continuously developing their knowledge, effectiveness and productivity. The editorial policy has been designed to encourage discussion among this peer group.
- Comprehensive bibliographies for each article mean that *touchREVIEWS in Oncology & Haematology* is an informative and valuable reference tool for use throughout the year.
- All articles are subject to peer review, and must adhere to the ICJME, GPP 2022, and COPE guidelines.

### Structure and format

- *touchREVIEWS in Oncology & Haematology* is a peer-reviewed, free-to-access, bi-annual journal comprising review articles, editorials, special reports and original research.
- The structure of each edition of the publication comprises section categories determined by the Editor. The degree of coverage assigned to each category is the decision of the Editor, and in part reflects the views of the Editorial Board.
- All articles state any author disclosures along with any funding, financial support and/or medical writing assistance.
- Each edition of *touchREVIEWS in Oncology & Haematology* is published in full, online at: [www.touchONCOLOGY.com](http://www.touchONCOLOGY.com)

### Editorial expertise

*touchREVIEWS in Oncology & Haematology* is supported by various levels of expertise:

- Guidance from an Editorial Board consisting of leading authorities from a variety of oncology and haematology disciplines.
- Invited contributors who are recognized authorities in their respective fields.
- Peer review – conducted by experts appointed for their experience and knowledge of a specific topic.
- An experienced team of editors and technical editors.

### Peer review

- On submission, all articles are assessed by the Editor to determine their suitability for inclusion and appropriateness for peer review.
- The Editor identifies appropriate reviewers, who are selected on the basis of their specialist knowledge in the relevant area, following consultation with a member of the Editorial Board where necessary.
- We aim to have the final peer review decision within 4 weeks.
- Following review, papers are either accepted without modification, returned to the author(s) to incorporate required changes, or not accepted for publication.

- The Editor reserves the right to accept or reject any proposed amendments on the advice of the Editorial Board and reviewers.

### Submissions and instructions for authors

- The Editor commissions articles with guidance from the Editorial Board and unsolicited articles are welcomed.
- The Editor is always keen to hear from authors wishing to discuss potential submissions, and will give due consideration to any proposals. Please contact the Editor for further details: [editorialmanager@touchmedicalmedia.com](mailto:editorialmanager@touchmedicalmedia.com)
- Instructions for authors are available on the website: [www.touchONCOLOGY.com](http://www.touchONCOLOGY.com)

### Distribution and readership

*touchREVIEWS in Oncology & Haematology* is distributed globally, on a bi-annual basis, through controlled circulation to senior professionals in the field globally.

### Free-to-access

All articles are free-to-access, which allows anyone in the oncology and haematology field to download published articles free of charge.

### Abstracting and indexing

*touchREVIEWS in Oncology & Haematology* is abstracted, indexed and listed in Embase, EBSCO, Genamics JournalSeek, Google Scholar, IndexCopernicus and Summon by Serial Solutions.

### Copyright

Authors transfer copyright of their article to Touch Medical Media, who publish the article as free-to-access to registered users.

### Online resources

[www.touchmedicalmedia.com](http://www.touchmedicalmedia.com) provides clinicians and other industry professionals with a free resources across nine therapy areas including cardiology, endocrinology, haematology, immunology, infectious diseases, neurology, oncology, ophthalmology and respiratory and pulmonary medicine.

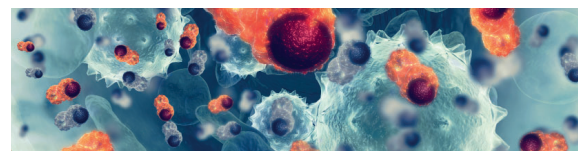
### Society partners

*touchONCOLOGY* has developed very valuable partnerships with the most respected not-for-profit medical societies both in Europe and the USA. These partnerships are key as *touchONCOLOGY.com* helps to promote awareness of these medical societies whilst also providing free-to-access, peer-reviewed articles and multimedia content to society members, which ensures that the industry is kept up to date with the latest cutting-edge content and opinion from world-renowned doctors.

### About Touch Medical Media

Touch Medical Media publishes a rich and diverse portfolio of free-to-access, peer-reviewed journals across the clinical and pharmaceutical arenas. Touch Medical Media aims to assist in the education and practice of healthcare and pharmaceutical professionals. □





## Foreword

### 1 Foreword

**Axel Merseburger**

*Department of Urology, Universitätsklinikum Schleswig-Holstein, Campus Lübeck, Germany*

## Editorial

### Gastrointestinal Cancers

### 2 Long-term Survival in Patients with Advanced Hepatocellular Cancer with Dual Immunotherapy Agents: Tremelimumab Plus Durvalumab

**Amit Mahipal,<sup>1</sup> Kanchi Patell<sup>1</sup> and Richard Kim<sup>2</sup>**

*1. Department of Oncology, University Hospitals Seidman Cancer Center, Case Western Reserve University, Cleveland, OH, USA; 2. Department of GI Oncology, H. Lee Moffitt Cancer Center, Tampa, FL, USA*

### Lung Cancer

### 5 A New Frontier in the Treatment of Epidermal Growth Factor Receptor-mutated Non-Small-Cell Lung Cancer: Amivantamab-vmjw and Chemotherapy

**Miguel García-Pardo and Pilar Garrido**

*Department of Medical Oncology, Hospital Universitario Ramón y Cajal, Madrid, Spain*

## Reviews

### Gynaecological Cancers

### 9 Dostarlimab for the Treatment of Endometrial Cancer: A Review

**Chelsea E Stewart and Dana Chase**

*Division of Gynecologic Oncology, Department of Obstetrics and Gynecology, University of California Los Angeles, Los Angeles, CA, USA*

### Gastrointestinal Cancers

### 12 Futibatinib for the Treatment of Previously Treated, Unresectable, Locally Advanced or Metastatic Intrahepatic Cholangiocarcinoma with Fibroblast Growth Factor Receptor 2 (FGFR2) Gene Fusions or Other Rearrangements

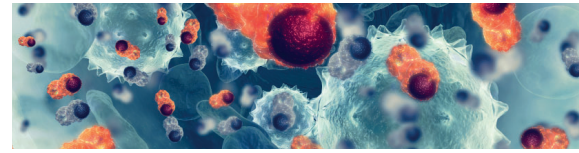
**Valerie Crolley and John Bridgewater**

*University College London Cancer Institute, London, UK*

### 20 Fruquintinib in Patients with Previously Treated Metastatic Colorectal Cancer

**Tiago Biachi de Castria,<sup>1,2</sup> Ruoyu Miao<sup>1,2</sup> and Richard D Kim<sup>1,2</sup>**

*1. Department of Gastrointestinal Oncology, H. Lee Moffitt Cancer Center and Research Institute, Tampa, FL, USA; 2. Morsani College of Medicine, University of South Florida, Tampa, FL, USA*



**Leukaemia**

- 25 Olutasidenib for Adults with Relapsed or Refractory Acute Myeloid Leukaemia with Isocitrate Dehydrogenase 1 Mutation**

**Florence Pasquier and Stéphane De Botton**

*Département d'Hématologie, Gustave Roussy, Université Paris-Saclay, Villejuif, France*

**Dermatological Cancers**

- 32 Immunotherapeutic Advances in the Treatment of Merkel Cell Carcinoma**

**Ruben J Cruz-Chamorro,<sup>1</sup> Alberic Gan,<sup>2</sup> John M Bryant<sup>1</sup> and Evan Wuthrick<sup>1</sup>**

*1. Department of Radiation Oncology, H. Lee Moffitt Cancer Center and Research Institute, Tampa, FL, USA;*

*2. Morsani College of Medicine, University of South Florida, Tampa, FL, USA*

**Breast Cancer**

- 36 Trastuzumab Deruxtecan for the Treatment of HER2-low Advanced or Metastatic Breast Cancer**

**Toshinari Yamashita**

*Department of Breast Surgery and Oncology, Kanagawa Cancer Center, Yokohama, Japan*